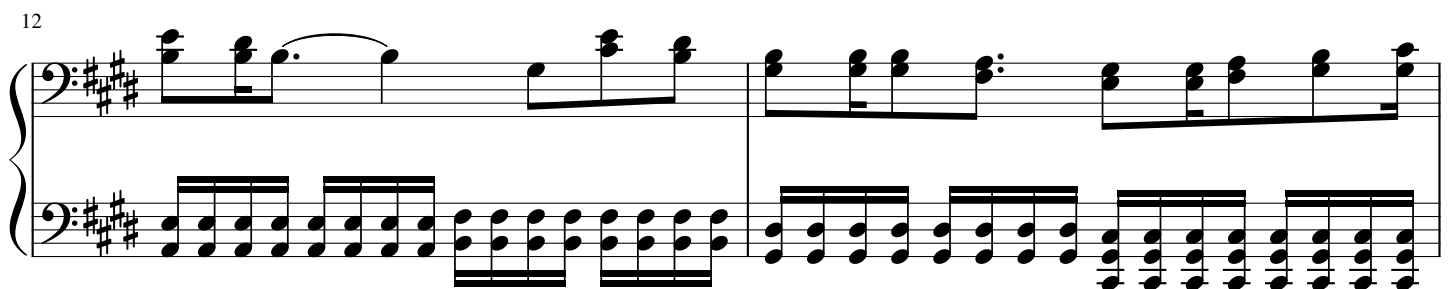
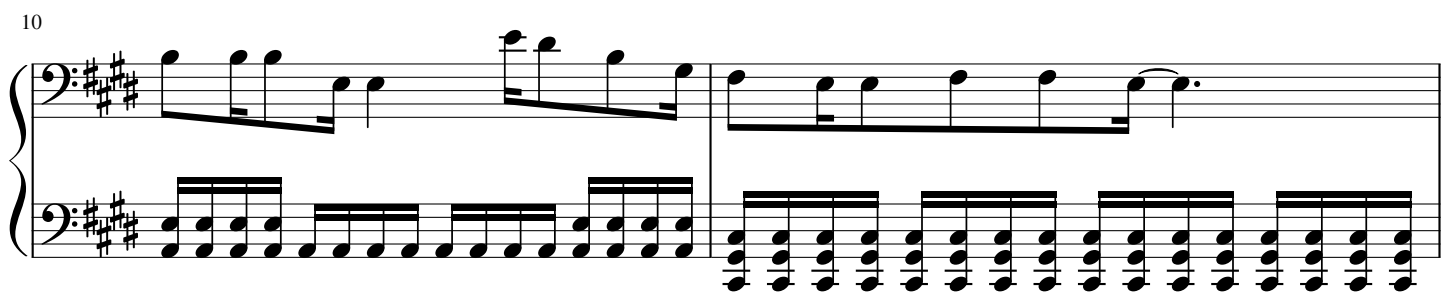
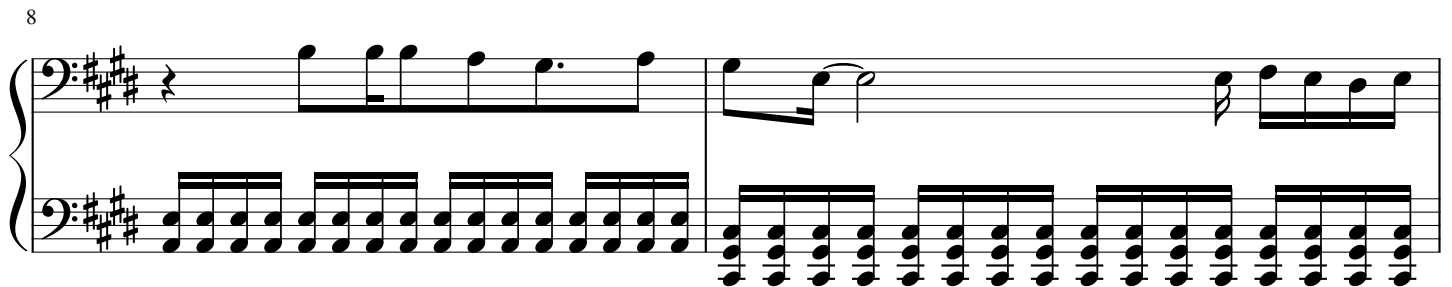
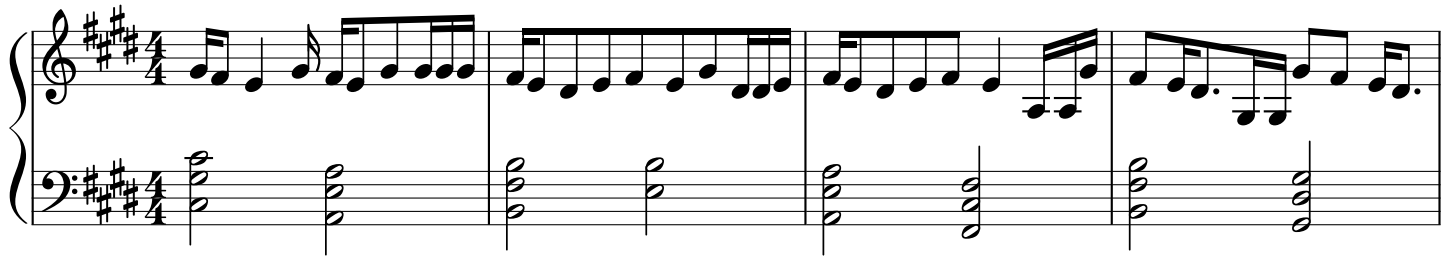


D-tecnoLife

Bleach (Opening 2)

UVERworld

♩ = 80



14

Measures 14 and 15 of a musical score. The key signature is three sharps (F#, C#, G#). The bass clef staff contains a melodic line in measure 14 and a dense block chord in measure 15. The treble clef staff has a whole rest in measure 14 and a single note in measure 15.

16

Measures 16, 17, and 18 of a musical score. The key signature is three sharps. The treble clef staff has a melodic line starting in measure 16. The bass clef staff features a constant eighth-note accompaniment pattern throughout these measures.

19

Measures 19 and 20 of a musical score. The key signature is three sharps. The treble clef staff continues the melodic line from measure 16. The bass clef staff maintains the eighth-note accompaniment pattern.

21

Measures 21 and 22 of a musical score. The key signature is three sharps. The treble clef staff continues the melodic line. The bass clef staff maintains the eighth-note accompaniment pattern.

23

Measures 23 and 24 of a musical score. The key signature is three sharps. The treble clef staff continues the melodic line. The bass clef staff maintains the eighth-note accompaniment pattern.

25

Measures 25, 26, and 27 of a musical score. The key signature is three sharps. The treble clef staff has a melodic line in measure 25, followed by whole rests in measures 26 and 27. The bass clef staff continues the eighth-note accompaniment pattern.

